



Avantis OpenCD.Enterprise

Advanced CD/DVD networking for large networks

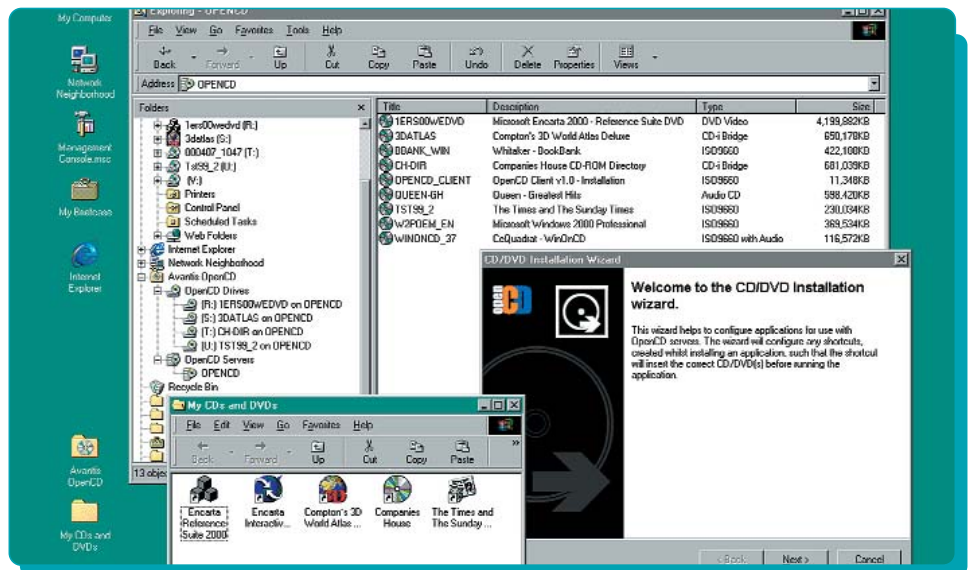
OpenCD from Avantis is a high performance CD/DVD server solution designed to allow multiple users on a network to share CD-ROM and DVD based information simultaneously. Optimised for the sharing of high bandwidth multimedia and video content on CD, OpenCD provides the perfect platform for CD-ROM based e-learning.

As a network attached storage device, OpenCD provides a smarter and easier way to network CDs than using a standard file server. All OpenCD servers also come with a unique virtual CD/DVD drive client which is guaranteed to network even the most complex CD and DVD formats.

OpenCD.Enterprise has been designed for large scale networks and utilises state of the art performance server architecture with Ultra-160 SCSI hard drives to deliver extremely fast CD networking to more than 100 concurrent users.

Why use OpenCD.Enterprise?

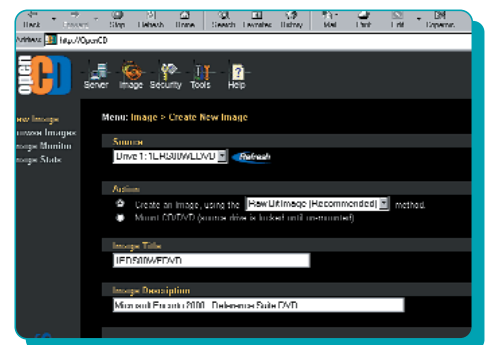
- CDs can be shared by hundreds of users simultaneously
- No need to physically hand out CDs or DVDs
- Eliminates problems of lost, scratched and damaged disks
- Super fast access to video-rich and multimedia CDs
- User limits can be set to automatically enforce software licensing
- Central management makes it easy to control individual / group access to all CDs



Above: The Avantis Client creates virtual CD/DVD drives on each PC which emulate real CD-ROM drives. Below: The OpenCD Web management interface enables remote administration of the server from anywhere on the network.

Key Features

- Plug and play NAS (network attached storage)
- Stores up to 600 CDs
- Avantis Multimedia Virtual Drive™ Client guarantees 100% CD/DVD compatibility
- Ultra-160 SCSI fast hard disk technology
- Secure simple-to-use web browser management
- Fully scalable storage capacity
- Includes a 10,000 seat Avantis Client licence
- Built in DVD-ROM drive for fast CD/DVD image creation
- Rack-mount case (4U)



Ideal For

- Large Secondary Schools, Colleges & Universities
- Aerospace, Engineering & Financial Organisations
- Large Enterprises

'OpenCD is a first rate device and a good example of how CD servers should be. Getting a CD or DVD onto the server is very easy... the CD imaging process only took us a few minutes to complete.'

OpenCD.Enterprise Technical Information

Administration

Attachment: Network attached storage (NAS) - direct attachment via network hub or switch

Initial Configuration: LCD front panel. No screen or keyboard required.

Management: Remote managed from Web browser (Internet Explorer or Netscape)

Security Options: Open Access, MS Workgroup (manual user/group entry), MS NT Domains & Active Directory

Capacity Expansion: Multiple spare bays (for customer pluggable expansion). RAID range is non-expandable.

Hardware

HDD & Interface Type: Ultra-160 SCSI (160 Mbytes/sec)

HDD Specification: 7200 RPM or greater. Average access time less than 8 milliseconds

HDD Capacity: 73- 438 GB

Ethernet Model: 10/100/1000 Ethernet auto-sense (copper). Fibre option also available.

Processor: Intel Pentium IV - 3 GHz or greater

Motherboard type: PC Server architecture, PCI bus, 400 MHz FSB

RAM Memory: 512 MB

Built in Optical Drive: DVD Drive

Case Type: 4U Rack Mount Case (sliders available)

Power Supply Unit (PSU): 100VA, 110/220VAC (switchable) 50/60 Hz

Software & Protocol

Server OS Platform: Microsoft Windows 2000 Server

Network Protocol Support: TCP/IP, NetBEUI

Application Services: HTTP, SMB, WINS, RPC, DCOM, CIFS

Workstation Software: Installation of Avantis Client incorporating MVD™ technology recommended for full CD & DVD compatibility. File & directory CD titles can be accessed using network client built into workstation OS

Workstation O/S Support: Windows 95/98/Me, NT 4.0, Windows 2000 and XP. Other O/S support by using SMB/CIFS client: MAC, Unix and Linux.

Media/Disc Support: CD-ROM, CD-DA (audio), High Sierra, ISO-9660, Joliet, Video CD, CDi, CD-R, CD-ROM XA, CDi Bridge, Photo CD, Enhanced Music CD, CD-RW, Packet CD, UDF 1.02, Multi-Session, DVD, DVD-Video (when not CSS encoded), Web-DVD plus many copy protected formats including SafeDisc.

Licensing

Server Licence: 10,000 users as standard

Avantis Client Licence: 10,000 seat Avantis Client licence included as standard.

Performance

Data Rate: Single User - Up to 8 Mbytes/sec, 10 User - 7 Mbytes/sec (typical)

Concurrent Access: 100+ concurrent multimedia users/ Up to 25-50 concurrent video clips

Maximum Recommended Users: Unlimited

Other Specifications

Size: 48 x 67 x 18 cm (19" 4U Rack Mount)

Weight: 22 kg

Certification: UL, CSA, FCC Class B, CE

Warranty & Support Options

Warranty: 2 year return-to-base included as standard. Extended warranties available.

Support: Free Avantis telephone, email and online support

Services: Installation, Total Maintenance (Software Maintenance & On-Site Hardware Maintenance) & Software Maintenance Support Packs available.

Due to our policy of continued product development, Avantis is constantly updating and improving product specifications. Please refer to the Avantis website www.avantisworld.com for the latest specifications.

Model Selection Guide - OpenCD.Enterprise

Rack-Mount Model No. (Education)*	Minimum Capacity (CDs)	Typical Capacity (CDs)	HDD Capacity (GB)	Capacity Expansion Model No. (Education)*	Expansion Unit Capacity (CDs)	Maximum Expanded Capacity (CDs)
OCE.100.RGE	100 CDs	150 CDs	73	XXC.OCE.100	100 CDs	600 CDs



For more information on OpenCD.Enterprise or other CD/DVD servers in the Avantis range, please visit our web site or contact your nearest Avantis Sales office.

Avantis UK Sales : +44 (0)800 376 3140
 Avantis USA Sales : (TOLL FREE) 888 222 1945
 Email : sales@avantisworld.com

www.avantisworld.com

